



Easy chess puzzle # 0010

By

G Bud Games
<https://gbud.in>

September 23, 2021

Contents

1	Easy chess puzzle - # 0010 - Check mate in one move	3
1.1	easy chess puzzle 0010	4
1.2	Solution to easy chess puzzle 0010	4
1.3	How to view the solution to easy chess puzzle 0010	5
1.4	How to get help for moves in the easy chess puzzle 0010	5
1.5	Play chess for free	7

List of Figures

1.1	Solve this easy chess puzzle 0010. Check mate in one move @ https://gbud.in/gr5pcx1	4
1.2	Solve this free chess puzzle online with solution @ https://gbud.in/gr5pcx1	4
1.3	Click the solution button to view solutions @ https://gbud.in/gr5pcx1	5
1.4	Click the help button to get help on next move @ https://gbud.in/gr5pcx1	6
1.5	Solve more easy puzzles @ https://gbud.in/chsezpz	6
1.6	Solve other puzzles @ https://gbud.in/chsgppz	6
1.7	Play chess online for free. Solve puzzles and play with friends	7
1.8	Solve this easy puzzle online by scanning this QR code or go to the link below	8

Chapter 1

Easy chess puzzle - # 0010 - Check mate in one move

Solve this easy chess puzzle and improve your chess games through improvement of your chess strategies and chess tactics.

Puzzle No : 0010

Difficulty level : Easy

Description : Check mate in one move

Next Move : White

Player level : Beginner

Short URL for puzzle : <https://gbud.in/gr5pcx1>

1.1 easy chess puzzle 0010

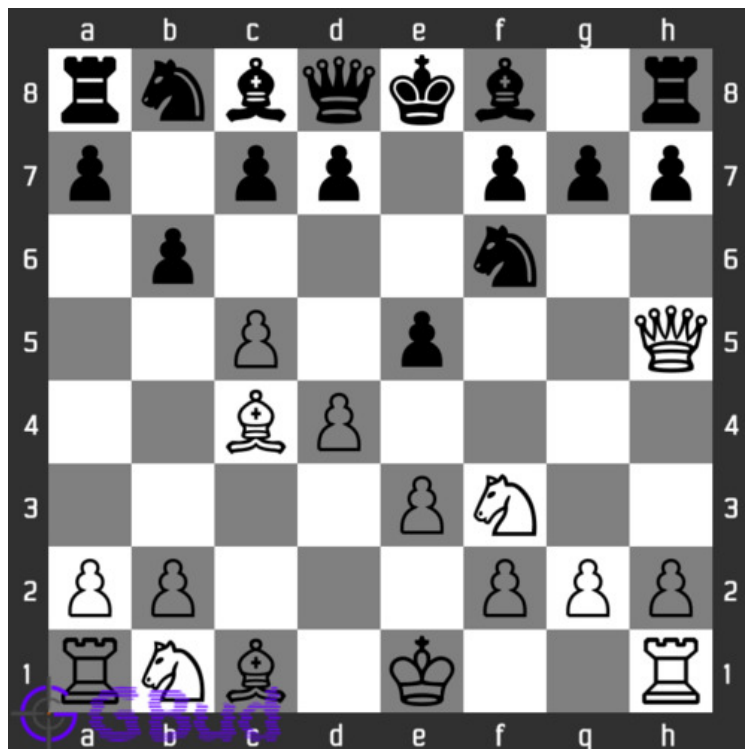


Figure 1.1: Solve this easy chess puzzle 0010. Check mate in one move @ <https://gbud.in/gr5pcx1>



Figure 1.2: Solve this free chess puzzle online with solution @ <https://gbud.in/gr5pcx1>

1.2 Solution to easy chess puzzle 0010

At this puzzle, next **move** is by **White**. The objective of the puzzle is to **checkmate** in one **move**. The **pieces** that can give the **check** in next move are your **queen** and **bishop**. Among these two the queen can end the game by giving a check mate by attacking the **pawn** at **f7**. This checkmate is called **scholar's mate**.

See the solution at the [puzzle page](#)

1.3 How to view the solution to easy chess puzzle 0010

To view the [solution to this puzzle](#), follow the steps given below

1. Go to the [puzzle page](#)
2. Click the solution button (Key as shown [below](#)) to view the solution



Figure 1.3: Click the solution button to view solutions @ <https://gbud.in/gr5pcx1>

1.4 How to get help for moves in the easy chess puzzle 0010

To get help or the possible next moves in the puzzle, , follow the steps given below

1. Go to the [puzzle page](#)
2. Click the help button (exclamation mark as shown [below](#)) to get help or suggestion on next possible [move](#)



Figure 1.4: Click the help button to get help on next move @ <https://gbud.in/gr5pcx1>



Figure 1.5: Solve more easy puzzles @ <https://gbud.in/chsezpz>



Figure 1.6: Solve other puzzles @ <https://gbud.in/chsgppz>

1.5 Play chess for free



Figure 1.7: Play chess online for free. Solve puzzles and play with friends

Play chess for free at <https://gbud.in/chs>

We present you a platform to play chess online with friends for free. No need to install any app. You can play chess for free without registration or login.

Simple. You can do several chess related activities.

1. solve chess puzzles
2. learn about chess
3. play chess with computer
4. play chess with friend
5. create your own chess games
6. fen viewer
7. fen editor
8. fen generator
9. pgn viewer
10. chess board editor
11. view famous chess games.



Figure 1.8: Solve this easy puzzle online by scanning this QR code or go to the link below

<https://gbud.in/gr5pcx1>

Read the latest article on Easy chess puzzle - # 0010 - Check mate in one move by scanning this QR code or click the link

Previous article : « [Easy chess puzzle - # 0009 - Avoid check mate in one move](#)

Next article : [Easy chess puzzle - # 0011 - Check mate in one move](#) »

[Back to top](#)

[Contact Us](#)

© GBud Games 2021